

LunnArk[®]
Light innovations at its best



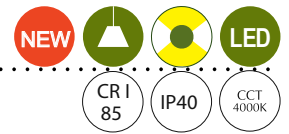
LINIO CURVE

Technical Decorative Linear

Direct and Indirect Lighting

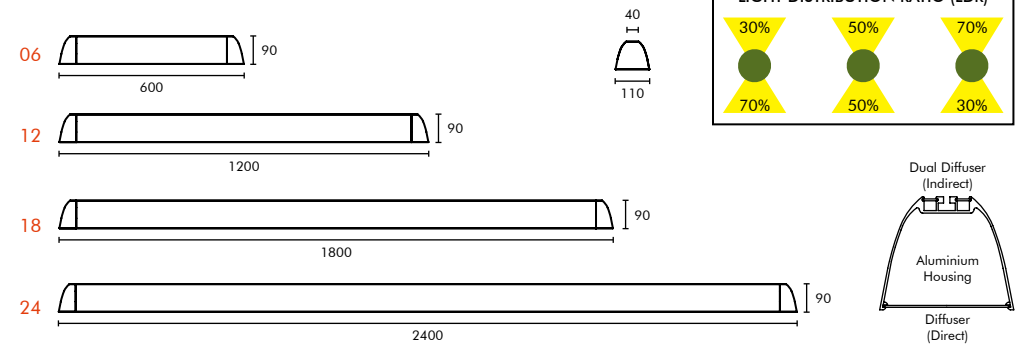


LINIO CURVE



Product Code	LN06 P18 FS40 02	Light Source	LED Module
Environment	Indoor	Power	60 W
Material	Extruded Aluminium	Lumens	6000 Lumens Lumen Output - 100Lm/W
Mounting	Pendant (P)	Light Distribution	Direct & Indirect (F)
Color	Jet Black (02)	Control	ON / OFF (S)
		Color Temperature (CCT)	4000K (40)

SIZES AVAILABLE



Dimensions are in Millimeters (mm)

Wattage & Lumen Output based on LDR

Luminaire Size (mm)	70% DOWN & 30% UP			Lumens	50% DOWN & 50% UP			Lumens	30% DOWN & 70% UP			Lumens
	Wattage (W)				Wattage (W)				Wattage (W)			
	Down	Up	Total		Down	Up	Total		Down	Up	Total	
600	14	6	20	2000	10	10	20	2000	6	14	20	2000
1200	28	12	40	4000	20	20	40	4000	12	28	40	4000
1800	42	18	60	6000	30	30	60	6000	18	42	60	6000
2400	56	24	80	8000	40	40	80	8000	24	56	80	8000

Linear luminaire with direct and indirect lighting, composed of extruded aluminium and curved end caps. Broad beam direct and indirect light distribution through PMMA diffuser which also works as a dust cover.

OPTIONS AVAILABLE

MOUNTING [X]	LIGHT DISTRIBUTION [Y]	CONTROL [Z]	CCT [##]	COLOR [##]
P - Pendant	F - Direct & Indirect	S - SWITCH	27 - 2700K	01 Signal White
S - Surface Mount	D - Direct	D - DALI	30 - 3000K	02 Jet Black
		A - ANALOG	40 - 4000K	03 Graphite Grey
			57 - 5700K	04 Traffic Yellow
			65 - 6500K	06 Traffic Red
				07 Baby Blue



Smooth curved edge



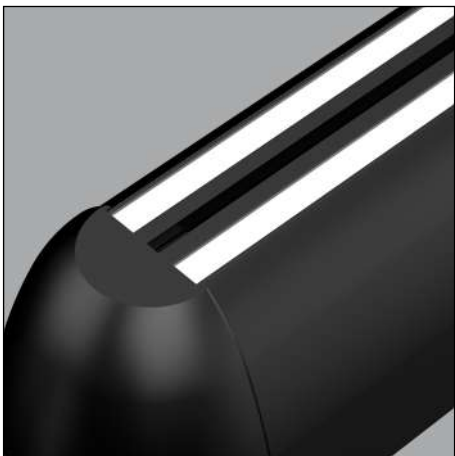
Simple end-cap fix

The Linio Curve is designed for effective and functional lighting while adding decorative element to your interiors.

The curved aluminium extruded end-cap compliment the extended diffusers to match curved edges, which stand out from traditional sharp edge linear lights.

Ergonomically designed dual up light with slotted diffuser gives better control feature for indirect lighting functionality of the product.

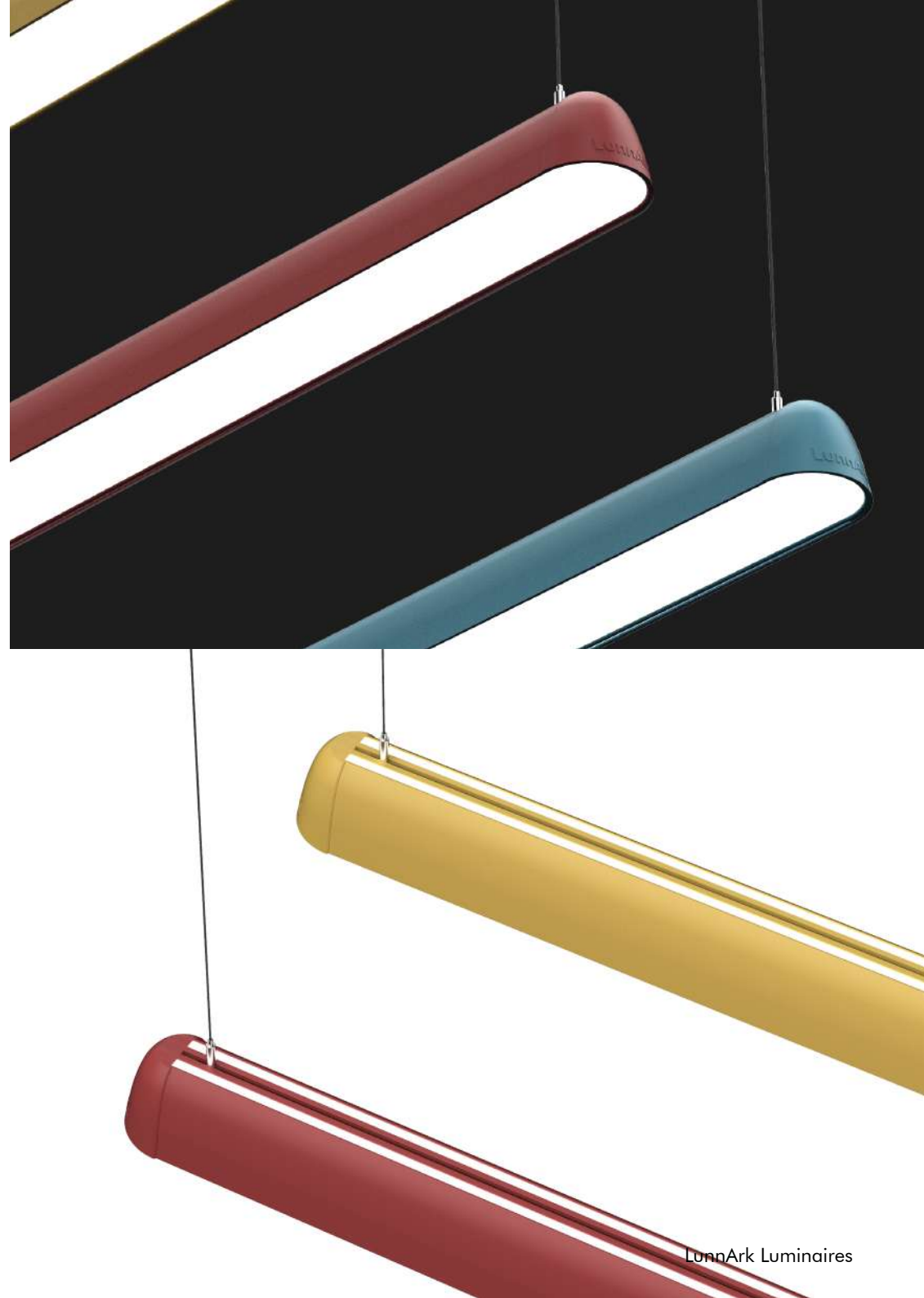
Thats the reason we call LINIO as Technical Decorative Linear with direct and indirect light.



Dual strip Indirect Lighting

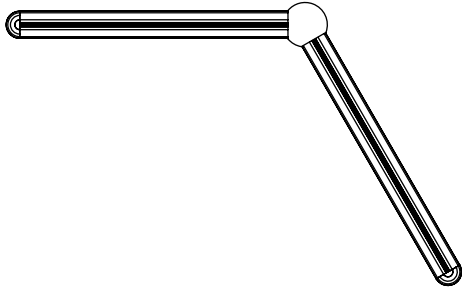


Adjustable threaded suspension



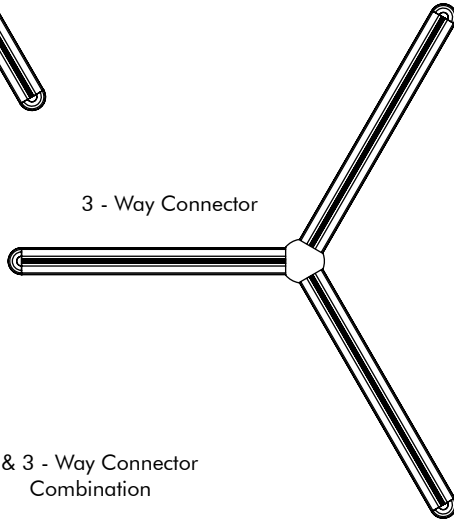
CLUSTER CONFIGURATION

2 - Way Connector

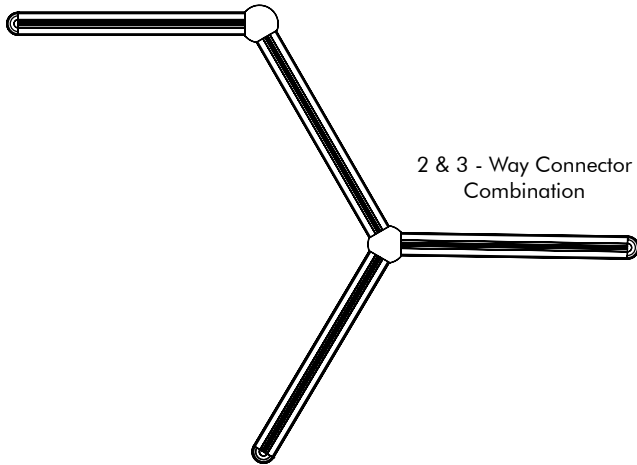


Can be configured as required using 2-way and 3-way Connectors.

3 - Way Connector



2 & 3 - Way Connector Combination



Linear Join



The Connectors are equipped with magnets which allow easy fixing and also ensures proper link between the fixtures.



Signal White



Jet Black



Graphite Grey



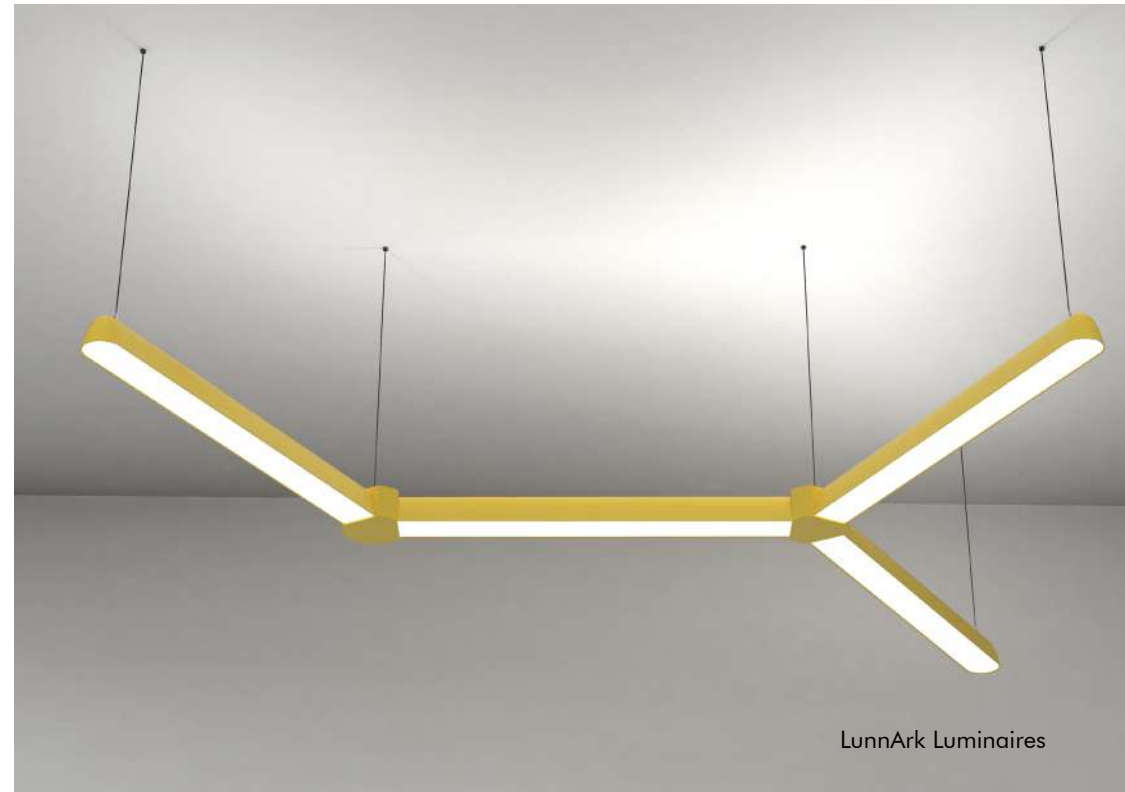
Traffic Yellow



Traffic Red



Baby Blue





NOTE:

- All Images shown are for illustration purpose only and may not be an exact representation of the product.
- This product is a proprietary item of Vtech Biotron.
- Customization is possible only if the light model permits.
- Luminaire design, size and color shall be adapted based on order requirement.

VTECH BIOTRON PVT LTD
#84, ANUSUYA ASHRAMA, 3RD MAIN, MAGADI MAIN ROAD
RAJAJINAGAR INDUSTRIAL TOWN - BENGALURU 560044
INDIA

080 23507469
TOLLFREE : 1800 890 2146

www.lunnark.com
info@vtechbiotron.com