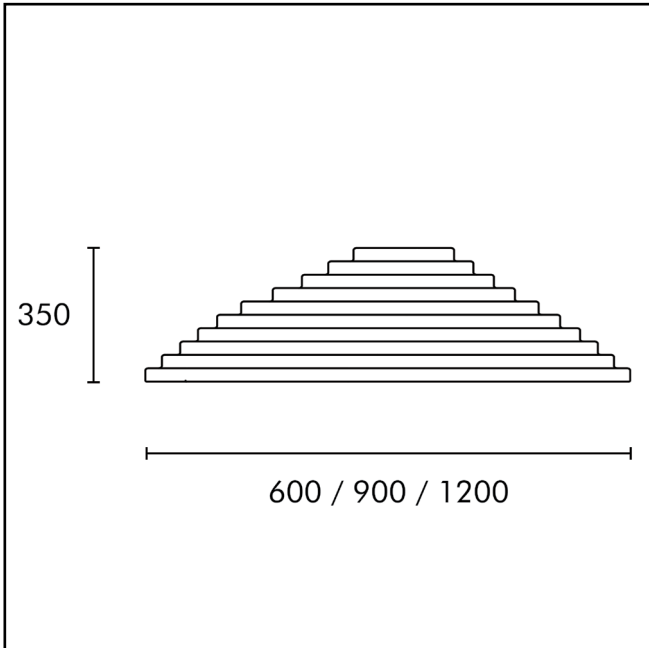
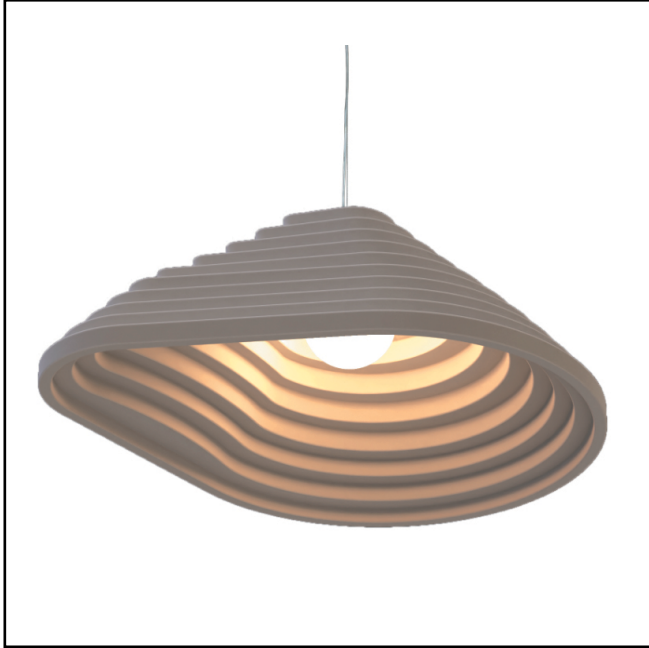


# SOLIS - 2

## Technical Specifications



Product Code	FP6B
Housing Material	FRP
Environment	Indoor
Mounting	Pendant
Size	600 / 900 / 1200
Wattage	20W / 30W
Light Distribution	Direct
Body Finish	FRP Finish
Optics	Glass Globe
Driver Mount	Inside Canopy Cup
Thermal Management	Passive Cooling
Input Voltage	180 - 280 AC 50Hz
Driver Control	Constant Current Driver
Control	Switch / DALI / Analog
Connection	Plug-in Type Pre-wired
Appliance Class	Class 2
Ingress Protection	IP40
Photobiological Safety	RG 0 - No Risk
Ambient Temperature	0 to +50° C
LED	Medium Power LED
Binning	3 Step MacAdam
Luminous Efficacy	95 Lm/W
CCT	2700K / 3000K / 4000K / 5700K / 6500K
CRI	≥80 (Standard) ≥90 (Optional) Tunable LED (Optional)
UGR	<19
LED Life	>50,000 hours

- Specifications are subject to change without notice.
- Images can vary from the original product.
- Colors are based on RAL Standards.